

# Engineering Guide

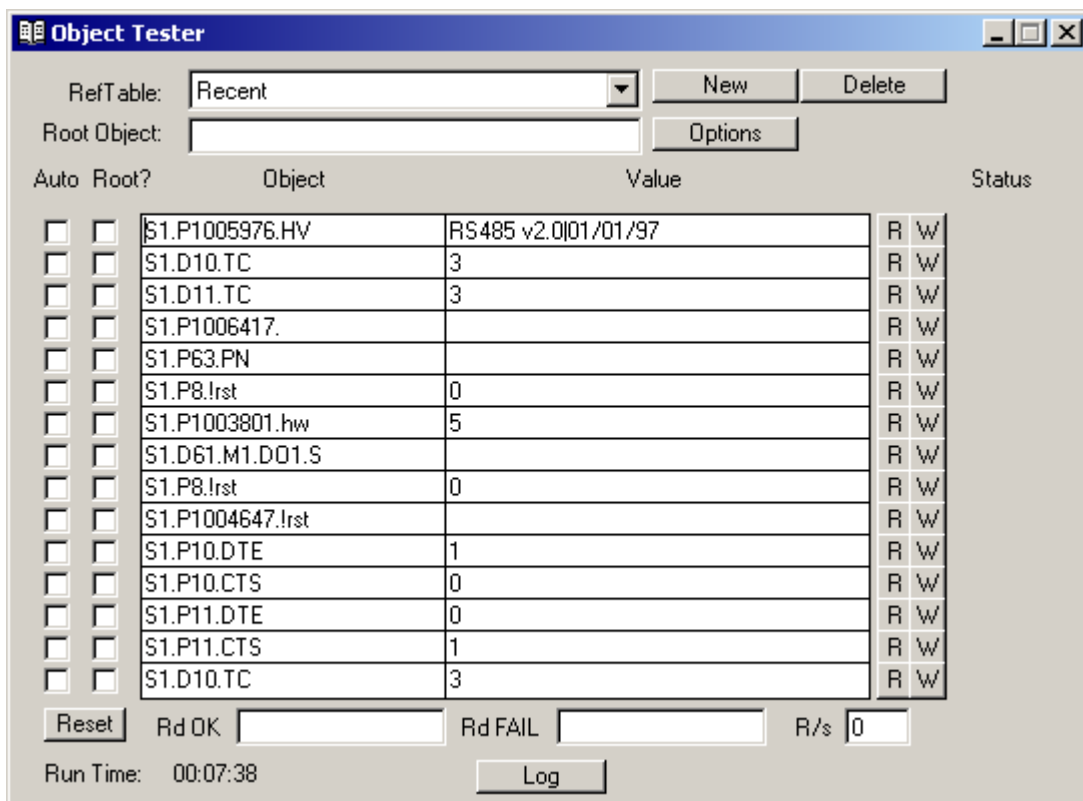
## ObjTest v10 Application

### Introduction

The ObjTest v10 application, shortened in this document to ObjTest, is a Visual Basic application used for testing object references by entering their full address into a reference field and reading and writing to them. ObjTest allows users to enter up to 25 object references at any one time and is capable of automatically reading from all the references at regular intervals. A 'Root Object' is provided for users to quote large numbers of long object references by having ObjTest insert the initial part of the reference that is common to all of them. In addition, the user can store a potentially infinite number of separate object table configurations for later use.

Once launched, ObjTest connects to Observer and can be located within ObServer or on any system connected to ObServer.

All features of ObjTest, such as the number of reference fields displayed, window title etc. can be configured either by changing configurations from Observer, adding certain parameters to the command line or from the application itself.



---

## **Engineering**

### **Step 1 – Install ObjTest**

Refer to the 'ObSys CD sleeve' for details on how to install ObSys.

### **Step 2 – Create a Shortcut to ObjTest**

Use Windows Explorer to create a shortcut by opening the ObSys\ActiveX directory, right clicking on the ObjTest.exe file, and selecting 'Create Shortcut'. The basic shortcut is created in the ObSys\ActiveX directory.

### **Step 3 – Specify the Command-line (optional)**

ObjTest accepts a number of parameters which affect its configuration at start-up. Use Windows Explorer to edit the shortcut by right clicking on the shortcut, and selecting 'Properties'. Modify the 'target' command-line, by appending after the ObjTest.exe text. For example:

```
C:\Program Files\North Building Technologies\Obsys\ActiveX\ObjTest\ObjTest.exe  
OC=35;L=Object Test Page;NR=12
```

This will instruct ObjTest to communicate with Obsys on channel 35, label the ObjTest window 'Object Test Page' and display 12 reference fields.

Refer to the 'Command Line Parameters' section of this document for full details of possible parameters.

### **Step 4 – Running ObjTest**

Double-click the ObjTest shortcut to run the application. The ObjTest window will appear. Unless affected by command-line parameters, ObjTest will run under a blank 'Recent' table, displaying 20 reference fields.

### **Step 5 – Configure ObjTest using Objects**

Once ObjTest is running and connected to ObServer, other applications can access objects within ObjTest to control most configuration settings. Use your object engineering software to view and modify ObjTest objects as necessary.

# Engineering Reference

## Command-Line Parameters

The command line for running ObjTest may include any of the following parameters

Parameter	Use	Values
OC	Specifies Observer Channel. Default is 99	Number: 0=Auto (find free channel) 1...199=Use specified channel
L	Window label	Text: up to 32 chars
NR	Number of reference fields to display. Default is 20	Num: 6...25
T	Specifies time interval for auto-timer (milliseconds)	Num: 1...2000 (up to 2 seconds)
RT	Open pre-created reference table (by name)	Text
RTI	Open pre-created reference table (by index)	Number 0...
E	Display error marking (object reference is highlighted when error occurs). Off by default	Num: 0=Off 1...=On

## Using the most recently accessed reference table

ObjTest records the most recently opened table in a table marked 'Recent'. By selecting it from the drop-down list of table names the user will be able to view the last table that was accessed before it the application was last shut down.

## Creating a new reference table

A new set of reference fields can be created by clicking 'New', next to the drop-down list of table names. Specify a name other than 'Recent' and press Enter. The new table will contain all the configurations of the previous table.

## Removing a user-created reference table

First select the table from the drop-down list then click 'Delete'. Accept the confirmation window that appears.

## ObjTest Settings

The individual settings for ObjTest are stored in the system registry, under HKEY\_USERS\Software\VB and VBA Program Settings\objtest.

## Error Log

ObjTest registers each failure to read an object in a temporary list accessed using the 'Log' button, displaying when in run-time the fault occurred, the object reference in question and a description of the type of fault registered. If the 'Make Text File' option in the log window is selected, a text file of the log will be created as C:\Obsys\ObjTest.txt.

## Error Marking

The user can also enable 'error marking' from the options dialog. When enabled any object references which produces a fault is highlighted in the reference table.

## Sorting Order

The reference tables you create are, by default, sorted in the order in which they were created, with the last one created being displayed on the drop down list first, after 'Recent'. If you wish to change this, go to the options dialog and select a different sorting order.

## Objects

When the AlmView application is run the following objects are created within ObServer. Use object software to view or modify these objects.

Object	Label	R/W	Type
Sc <sup>[1]</sup>	System on channel c	-	[ObjTest v10]

## Notes

[1] The ObServer Channel, c, is a number in the range 1...255.